

SSLC Model IT Practical Examination 2011 Installation Guide

Pre installation system requirements

For GNU/Linux IT@School (3.0, 3.2)

Minimum free disk space : 500MB on the installation partition
Minimum screen resolution : 800 X 640

For GNU/Linux IT@School version 3.8

Minimum free disk space : 500MB on the installation partition
Minimum screen resolution : 800 X 640

For Ubuntu IT@School version 9.10 and 10.04

Minimum free disk space : 500MB on the installation partition
Minimum screen resolution : 800 X 640

Contents of the Distribution

- itexam_7.2-SGL3.0-3.2 - For it@school-3.2 Corresponds to version (Release year 2008)
- itexam_7.2-SGL3.8 - For it@school-3.8 Corresponds to version (Release year 2010).
- itexam_7.2-Ubuntu9.10-10.04- For it@school_Ubuntu-9.10, 10.04 Corresponds to version (Release year 2010)

Uninstalling the old software

Step 1

From the Desktop menu choose

Desktop/System → Administration → Synaptic Package Manager.

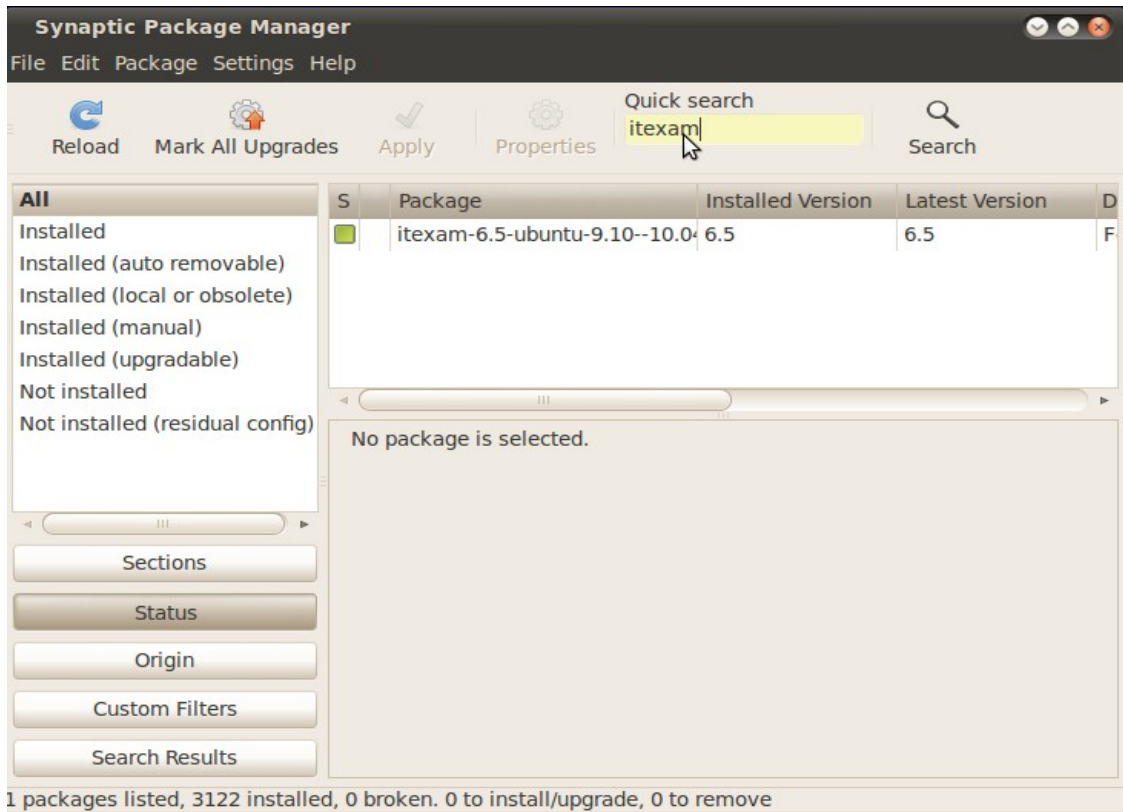
Step 2

The Synaptic Package Manager will now prompt you for the 'root' password.

Step 3

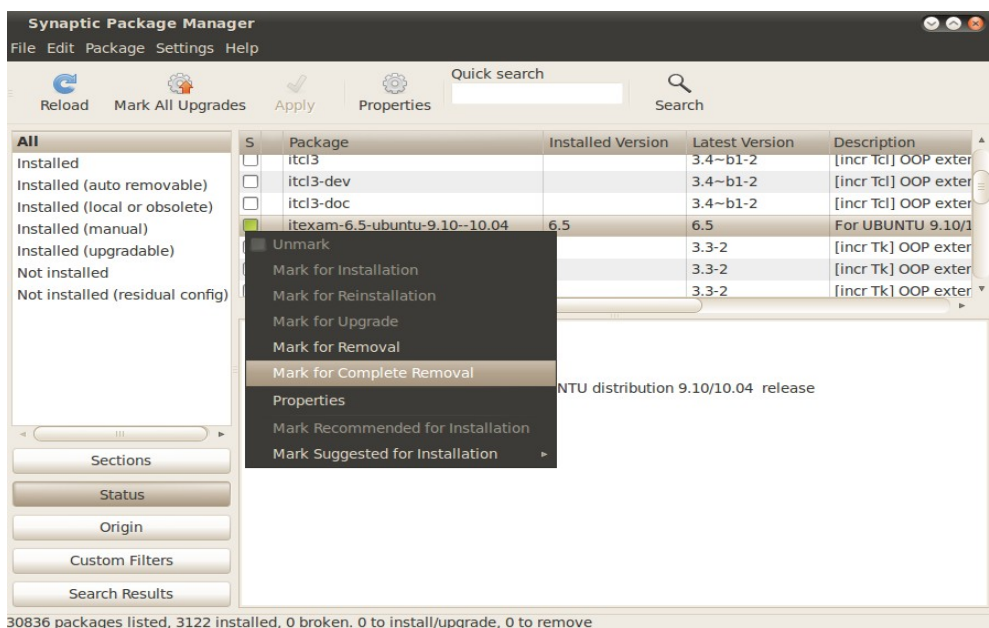
In the Synaptic Package Manager window, search for lower version of 'itexam' is there in the system or not.

So in the search box search for "itexam" .



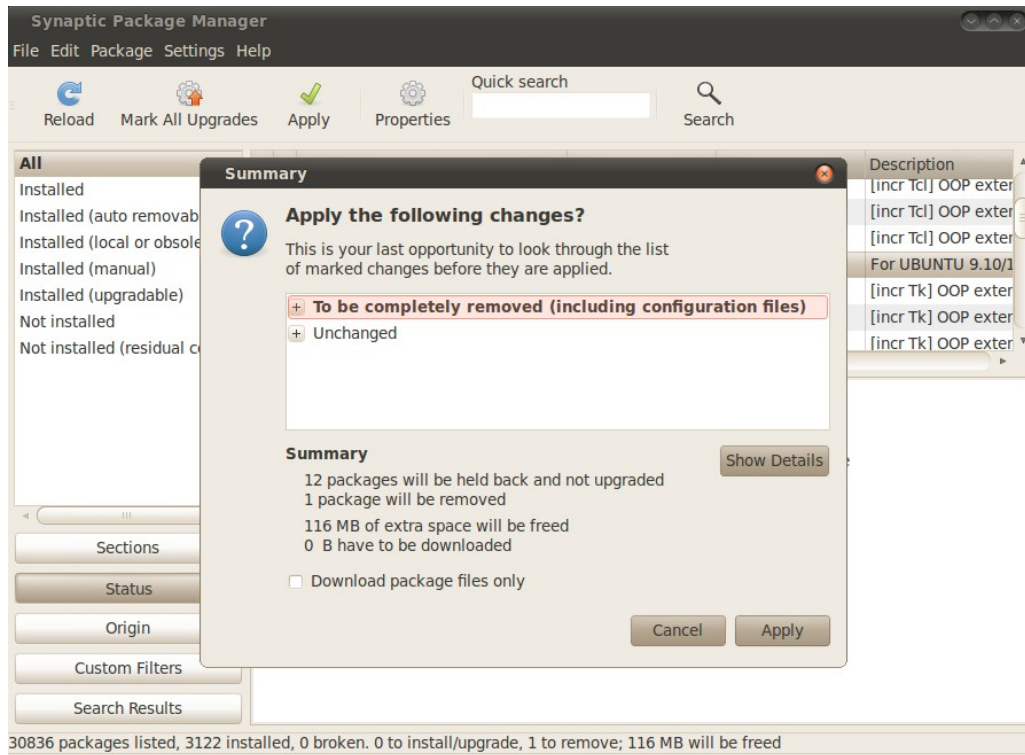
Step 4

Right click on the package and Mark as "Mark for Complete Removal"



Step 5

Click on Apply button for complete removal of the old package.



Installing the software

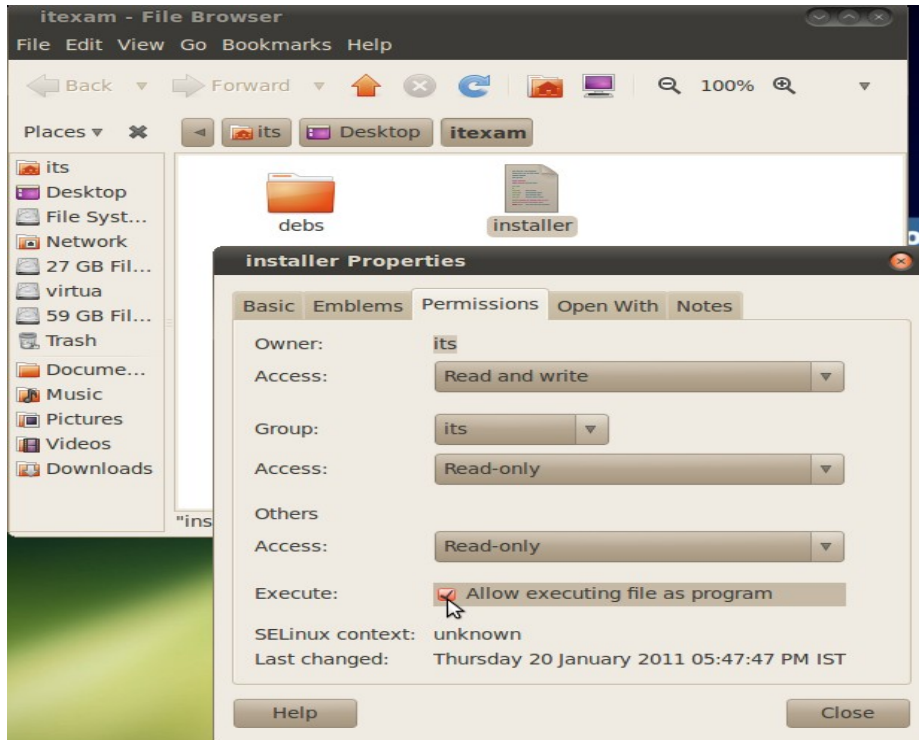
(Do not login as root , use Default user [the user create at the time of OS installation] for installing the itexam software)

There is only one installer for all versions of OS (3.0, 3.2, 3.8 and ubuntu)
This time IT School GNU/Linux Lite version cannot be used for itexam.

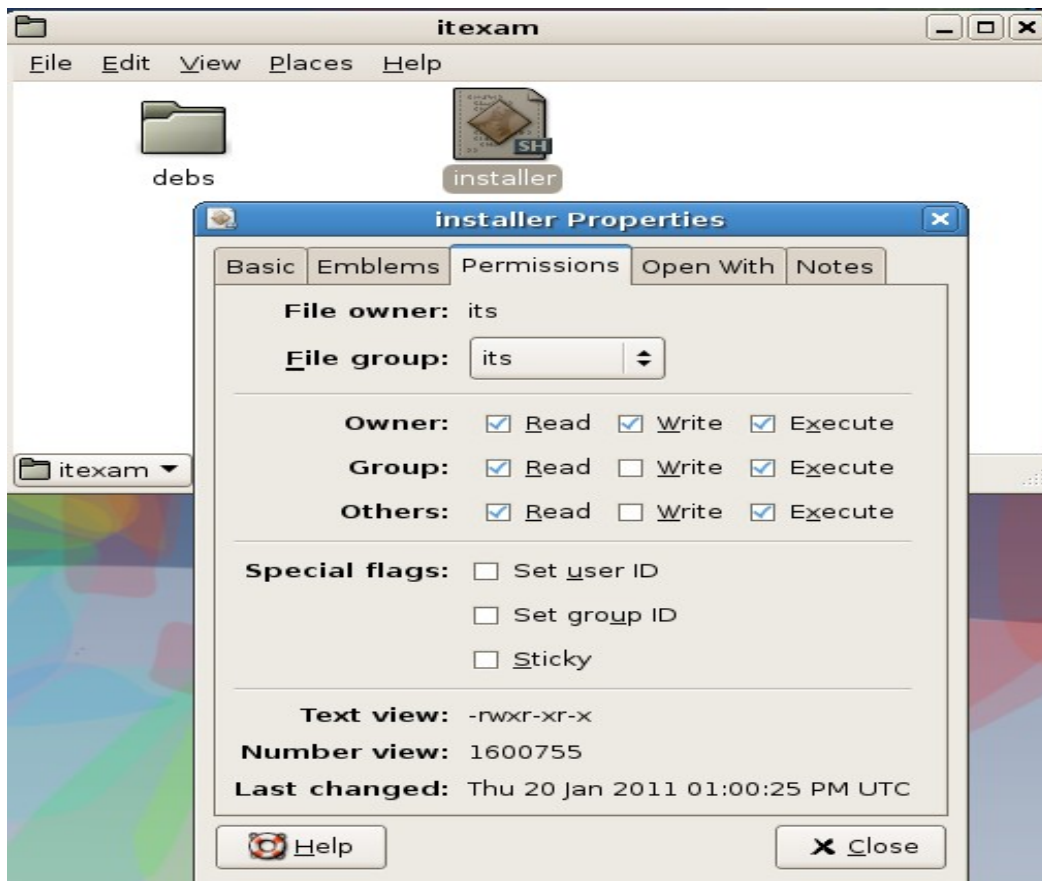
- Copy the folder 'itexam' and its content from the examination software CD to your user's home folder .
- Open the folder 'itexam' from home folder.
- Set execute permission to the file 'installer'

Right click on the file - properties - permissions – Check (execute/allow execute)- Close (see the screenshots below).

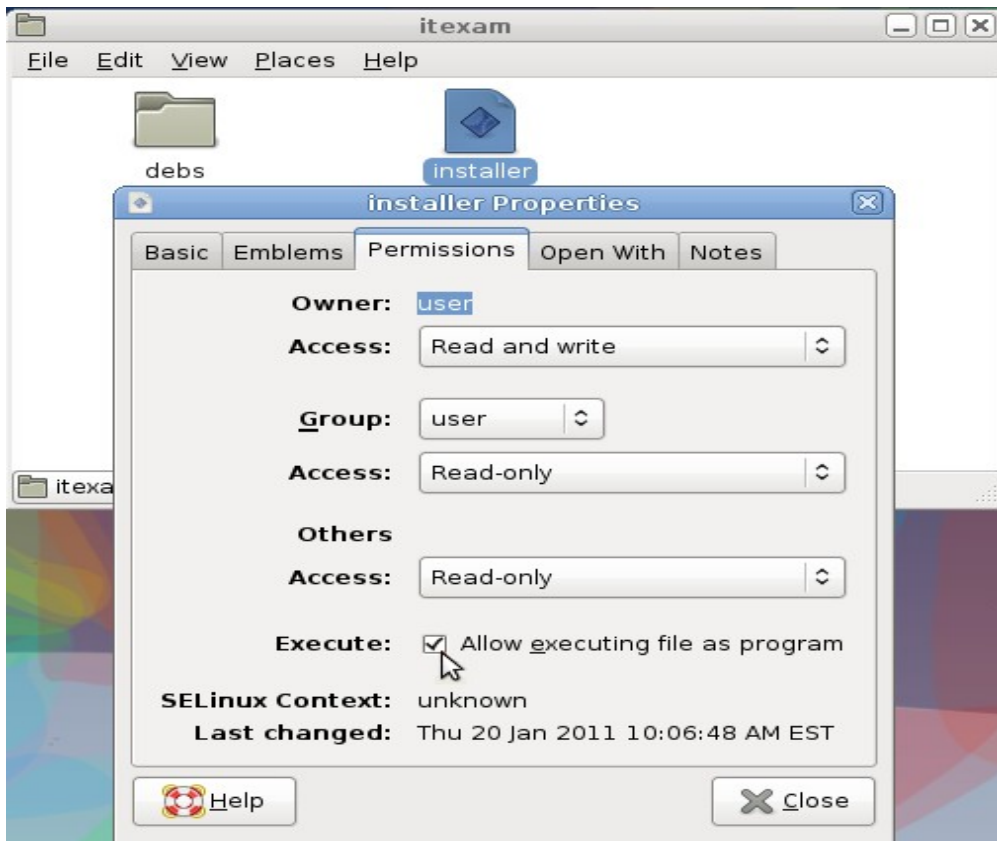
it@school_Ubuntu



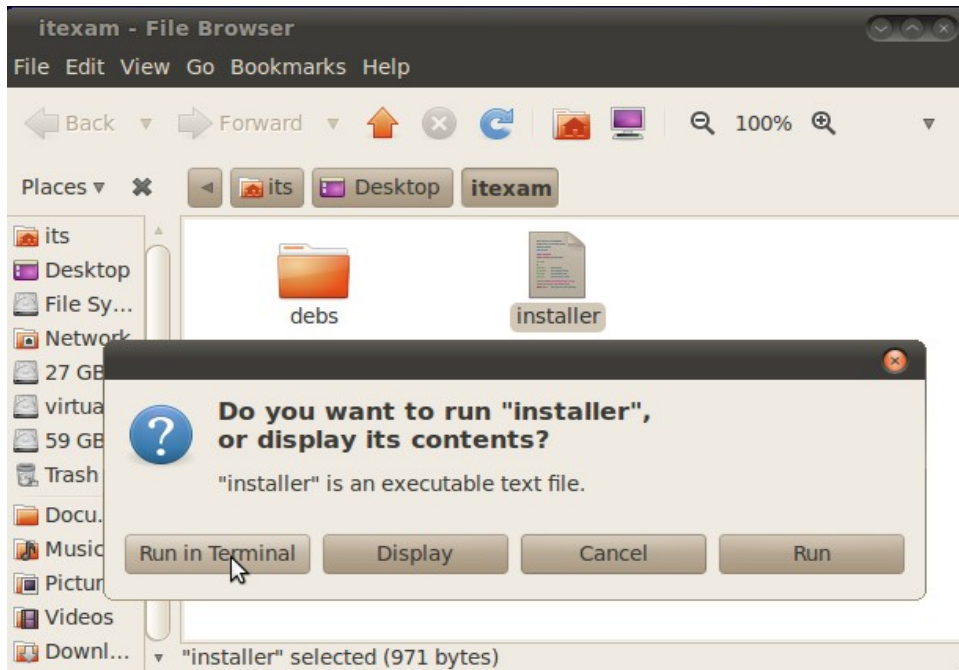
it@school-3.0, 3.2 (give all execute permissions)



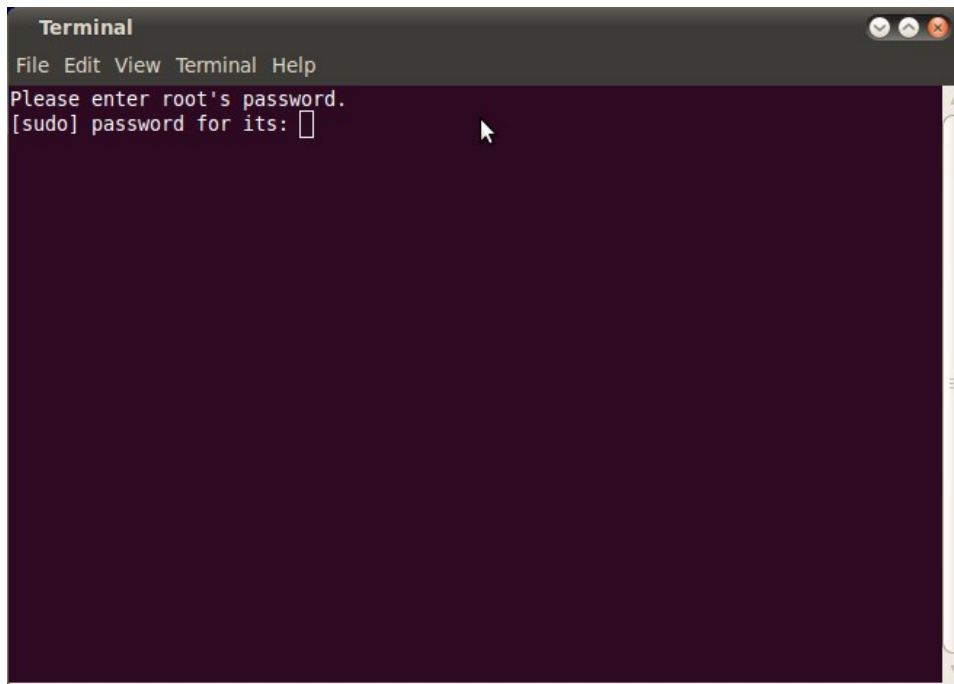
it@school-3.8



- Double Click the file 'installer' and click on 'Run in Terminal'



- It will ask the root password , then type the **password** and press enter , This will install the examination software. (Type First user password in the case of ubuntu)



After installation the terminal window will be **closed automatically**.

Delete the folder '**itexam**' and its all contents from the **home** folder after finishing installation.

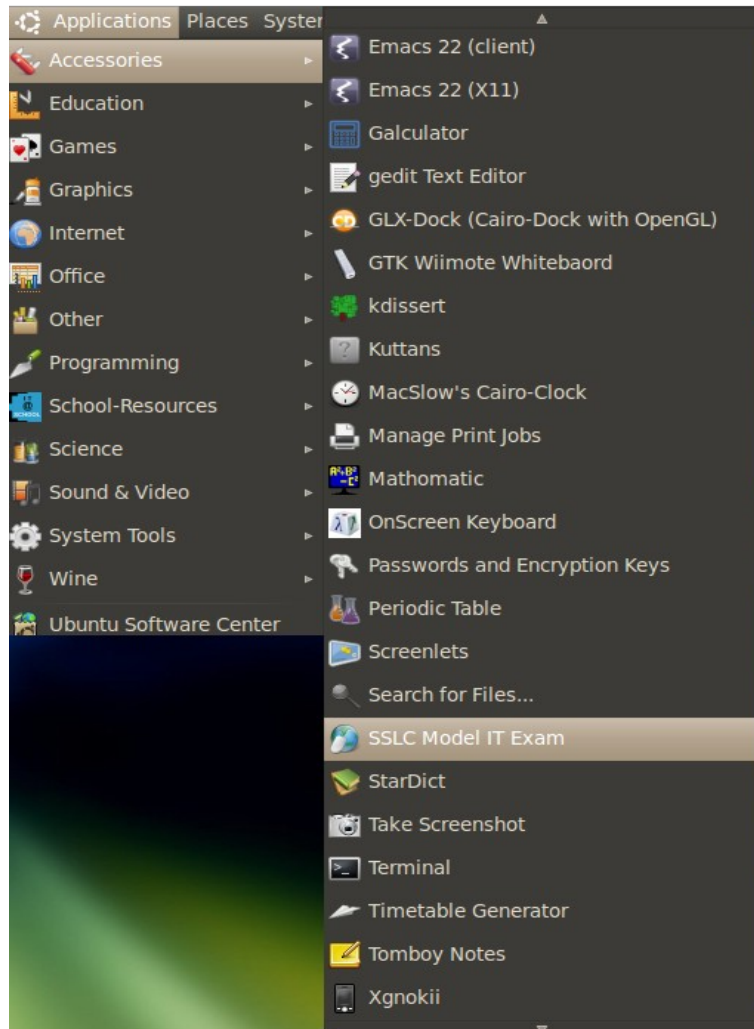
Now, **CREATE A NEW USER** for Conducting the Examination

Before running the 'itexam software', **Remove the folders Documents, Images8, Images9, Images10, exam8, exam9, exam10** from the **home** folder, if they exist.

Runnig the software

After login in New User

Select: Applications -->Accessories -->SSLC Model IT Exam.



This is where the school registration takes place. After the registration is complete you will see the following icon corresponding to the ITExam program on your desktop.

